
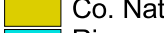

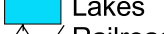

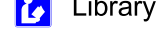
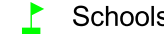

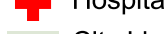
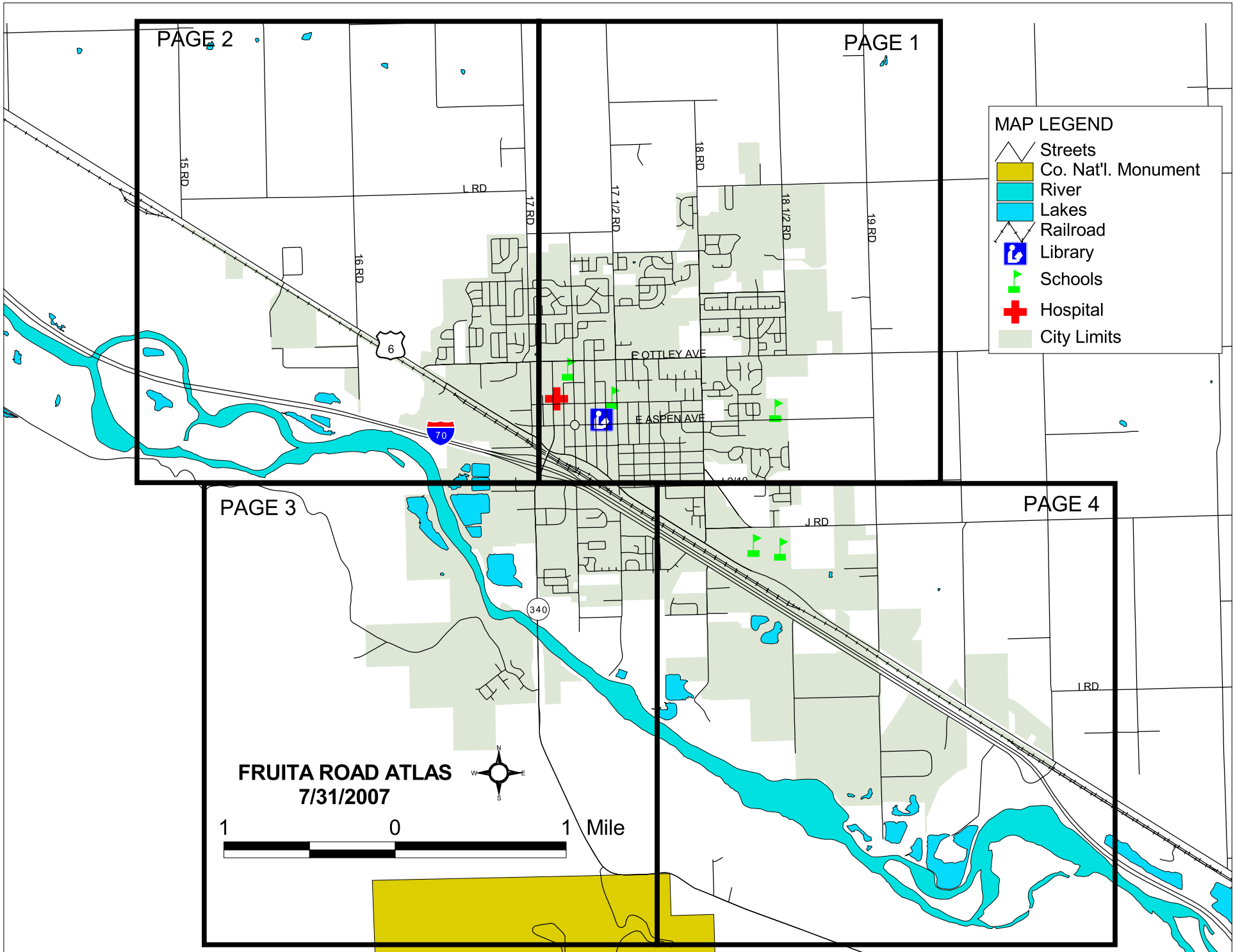


PAGE 2

PAGE 1

MAP LEGEND

-  Streets
-  Co. Nat'l. Monument
-  River
-  Lakes
-  Railroad
-  Library
-  Schools
-  Hospital
-  City Limits



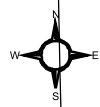
PAGE 3

PAGE 4

FRUITA ROAD ATLAS
7/31/2007

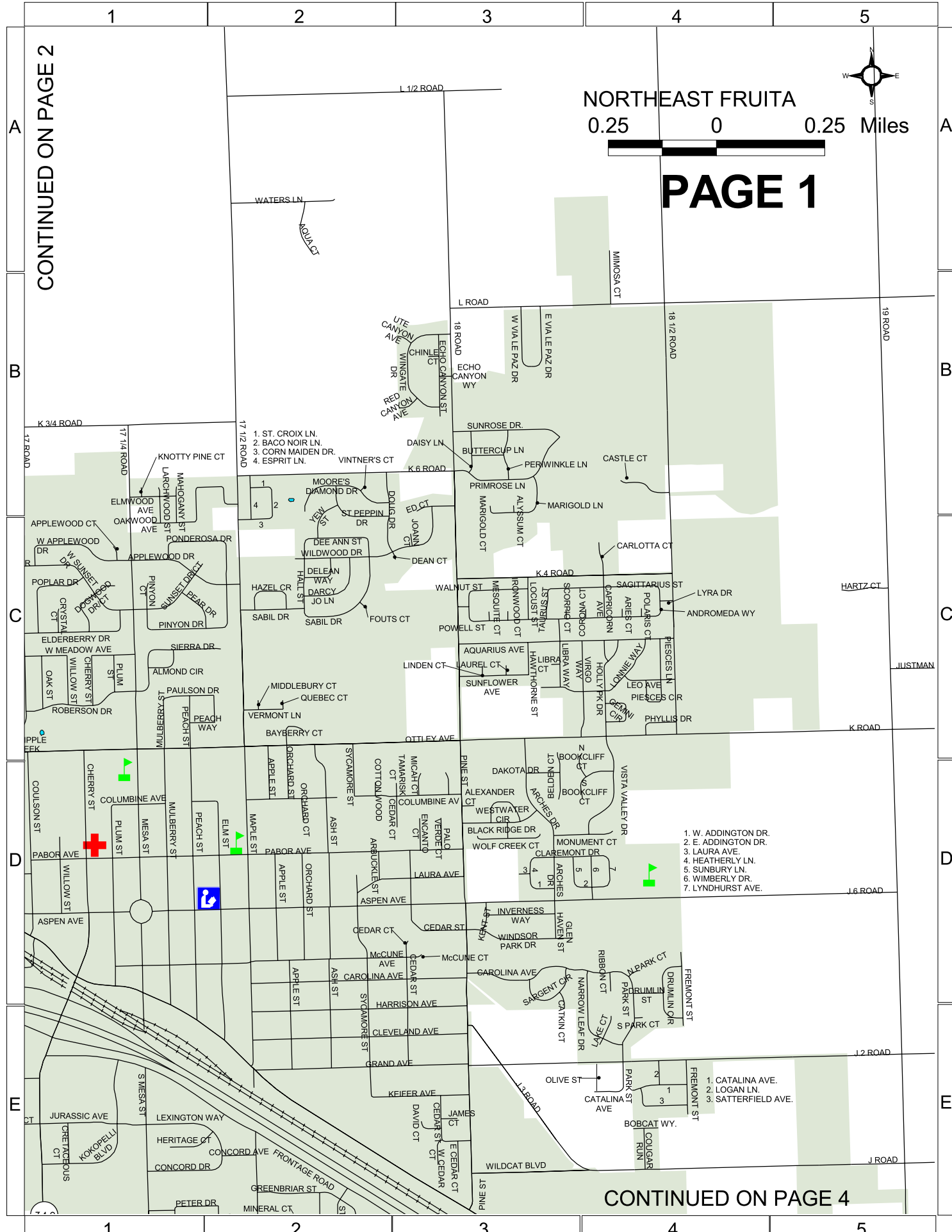


CONTINUED ON PAGE 2



NORTHEAST FRUITA
0.25 0 0.25 Miles

PAGE 1



- 1. ST. CROIX LN.
- 2. BACO NOIR LN.
- 3. CORN MAIDEN DR.
- 4. ESPRIT LN.

- 1. W. ADDINGTON DR.
- 2. E. ADDINGTON DR.
- 3. LAURA AVE.
- 4. HEATHERLY LN.
- 5. SUNBURY LN.
- 6. WIMBERLY DR.
- 7. LYNDBURST AVE.

- 1. CATALINA AVE.
- 2. LOGAN LN.
- 3. SATTERFIELD AVE.

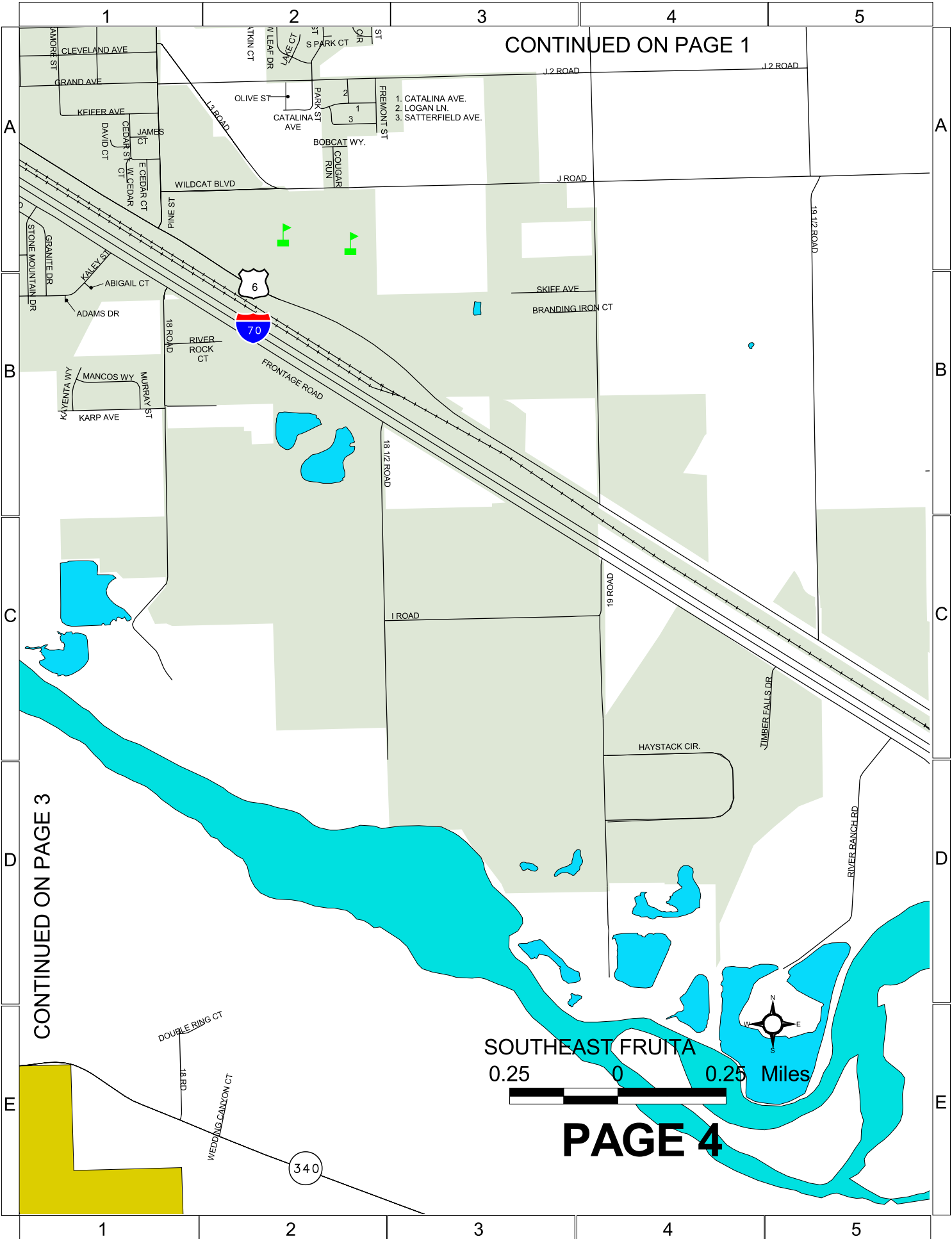
CONTINUED ON PAGE 4

CONTINUED ON PAGE 1

SOUTHEAST FRUITA
0.25 0 0.25 Miles

PAGE 4

CONTINUED ON PAGE 3



FRUITA ROADS INDEX

15 ½ Rd.	Pg. 2, A-2 Pg. 2, B-2	Alexandar Ct.	Pg. 1, D-3	Catalina Ave.	Pg. 1, E-4 Pg. 4, A-2
15 Rd.	Pg. 2, A-1 Pg. 2, B-1	Almond Cir.	Pg. 1, C-1	Catalpa Ct.	Pg. 2, C-5 Pg. 2, C-4
16 ½ Rd.	Pg. 2, A-4	Allysum Ct.	Pg. 1, C-3	Catkin St.	Pg. 1, E-3
16 Rd.	Pg. 2, A-3 Pg. 2, B-3 Pg. 2, C-3 Pg. 2, D-3	Amelia Rose Ct.	Pg. 2, C-5	N. Cedar Ct.	Pg. 1, D-3
17 ½ Rd.	Pg. 1, A-2 Pg. 1, B-2 Pg. 3, D-5	Amethyst Dr.	Pg. 2, C-4	E. Cedar Ct.	Pg. 1, E-3
17 ¼ Rd.	Pg. 1, B-1	Andromeda Way	Pg. 1, C-4	W. Cedar Ct.	Pg. 1, E-3
17 Rd.	Pg. 2, A-5 Pg. 2, B-5 Pg. 2, C-5	Annabelle Ct.	Pg. 2, C-5	Cedar Glen Wy.	Pg. 1, E-3
18 ½ Rd.	Pg. 1, A-4 Pg. 1, B-4 Pg. 1, C-4 Pg. 4, B-2 Pg. 4, C-2	Anthracite Dr.	Pg. 2, C-5	Cedar Way	Pg. 1, D-3
18 Rd.	Pg. 1, A-3 Pg. 1, B-3 Pg. 1, C-3 Pg. 4, B-1 Pg. 4, C-1	Apple St.	Pg. 1, D-2 Pg. 1, E-2	Celestite Dr.	Pg. 2, C-5
19 ½ Rd.	Pg. 4, A-5 Pg. 4, B-5 Pg. 4, C-5 Pg. 4, D-5	Applewood Dr.	Pg. 1, C-1 Pg. 1, C-2	Chelsea Cir.	Pg. 3, C-5
19 Rd.	Pg. 1, A-5 Pg. 1, B-5 Pg. 1, C-5 Pg. 1, D-5 Pg. 1, E-5 Pg. 4, A-3 Pg. 4, B-3 Pg. 4, C-3 Pg. 4, D-3	Applewood Ct.	Pg. 1, C-1	Cipolla Rd.	Pg. 2, D-2 Pg. 2, D-3
		Aqua Ct.	Pg. 1, A-2	Cherry St.	Pg. 1, C-1 Pg. 1, D-1
		Aquarius Ave.	Pg. 1, C-3 Pg. 1, C-4	Claremont Dr.	Pg. 1, D-3
		Arbuckle St.	Pg. 1, D-2	Clemens Way	Pg. 3, C-4
		Arches Dr.	Pg. 1, D-3	Cleveland Ave.	Pg. 1, E-2 Pg. 1, E-3
		Aries Ct.	Pg. 1, C-4	Cliffrose Ave.	Pg. 2, C-5
		Ash St.	Pg. 1, D-2 Pg. 1, E-2	Colonial Ct.	Pg. 3, C-5
		Aspen Ave.	Pg. 1, D-1 Pg. 1, D-2 Pg. 1, D-3	Columbine Ave.	Pg. 1, D-1 Pg. 1, D-2 Pg. 1, D-3
		Azurite Dr.	Pg. 2, C-4 Pg. 2, C-5	Comstock Dr.	Pg. 2, C-5 Pg. 2, D-5
		B		Concord Dr.	Pg. 3, C-4 Pg. 3, C-5
		Baco Noir Ln.	Pg. 1, B-2	Corona Ct.	Pg. 1, C-4
		Bayberry Ct.	Pg. 1, C-2	Corn Maiden Dr.	Pg. 1, B-2
		Belden Ct.	Pg. 1, D-3	Cottonwood Ct.	Pg. 1, D-2
		Black Ridge Dr.	Pg. 1, D-3	Cougar Run	Pg. 2, A-2
		Bobcat Way	Pg. 4, A-2	Coulson St.	Pg. 1, D-1
		Bonnie Vista Dr.	Pg. 3, C-5	Cresthaven Dr.	Pg. 2, C-5
		N. Bookcliff Ct.	Pg. 1, D-4	Cretaceous Ct.	Pg. 3, B-4 Pg. 3, C-4
		S. Bookcliff Ct.	Pg. 1, D-4	Cripple Creek Dr.	Pg. 2, C-5
		Branding Iron Ct.	Pg. 4, B-3	Crown Ct.	Pg. 3, D-3
		Breeze Dr.	Pg. 3, A-3	Crystal Ct.	Pg. 1, C-1
		Buttercup Lane	Pg. 1, B-3	Crystal Way	Pg. 2, C-5
		C		D	
		Cambridge Ct.	Pg. 3, C-5	Dakota Dr.	Pg. 1, D-3
		Capricorn Way	Pg. 1, C-4	Daisy Lane	Pg. 1, B-3
		Carlotta Ct.	Pg. 1, C-4	Darcy Jo Lane	Pg. 1, C-2
		Carolina Ave.	Pg. 1, D-2 Pg. 1, D-3 Pg. 1, D-4	David Ct.	Pg. 1, E-3
		Castle Ct.	Pg. 1, B-4		

FRUITA ROADS INDEX

Dean Ct.	Pg. 1, C-3	Gemini Ct.	Pg. 1, C-4		Pg. 1, D-5
Dee Ann St.	Pg. 1, C-2	Glen Haven St.	Pg. 1, D-3	James Ct.	Pg. 1, E-3
Delean Way	Pg. 1, C-2	Golden Jubilee Dr.	Pg. 2, B-5	Jasper Dr.	Pg. 2, C-5
Diane Ct.	Pg. 3, D-4	Goldrush Dr.	Pg. 2, C-5	Joann Ct.	Pg. 1, C-2
Dogwood Ct.	Pg. 1, C-1		Pg. 2, D-5		Pg. 1, C-3
Dogwood Dr.	Pg. 1, C-1	Grand Ave.	Pg. 1, E-2	Juniper St.	Pg. 2, C-4
Double Ring Ct.	Pg. 4, E-1		Pg. 1, E-3		Pg. 2, D-4
Doug Dr.	Pg. 1, C-3	Granite Dr.	Pg. 4, A-1	Jurassic Ave.	Pg. 3, B-4
Dover St.	Pg. 3, C-5		Pg. 4, B-1	Jurassic Ct.	Pg. 3, B-4
Drumlin Cir.	Pg. 1, D-4	Greenbriar St.	Pg. 3, C-5	Justman St.	Pg. 1, C-5
	Pg. 1, E-4	Greenway Dr.	Pg. 2, D-5		
Drumlin St.	Pg. 1, E-4	H		K	
E		Hall St.	Pg. 1, C-2	K Rd.	Pg. 1, C-3
Echo Canyon St.	Pg. 1, B-3	Harrison Ave.	Pg. 1, E-2		Pg. 1, C-4
Echo Canyon Way	Pg. 1, B-3		Pg. 1, E-3		Pg. 1, C-5
Ed Ct.	Pg. 1, C-3	Hartz Ct.	Pg. 1, C-5	K ¾ Rd.	Pg. 1, B-1
Elberta Dr.	Pg. 2, C-5	Hawthorne St.	Pg. 1, C-3		Pg. 1, B-2
Elderberry Dr.	Pg. 1, C-1	Hazel Cir.	Pg. 1, C-2	K.4 Rd.	Pg. 1, C-3
Elm St.	Pg. 1, D-2	Heath Dr.	Pg. 2, C-5		Pg. 1, C-4
	Pg. 1, E-2	Heatherly Dr.	Pg. 1, D-3	K.6 Rd.	Pg. 1, B-2
Elmwood Ave.	Pg. 1, C-1	Hemlock Dr.	Pg. 2, C-5		Pg. 1, B-3
	Pg. 1, C-2	Henry Cir.	Pg. 3, C-5	Kaley St.	Pg. 3, C-5
Encanto Ct.	Pg. 1, D-3	Heritage Ct.	Pg. 3, C-5		Pg. 4, B-1
Esprit Ln.	Pg. 1, B-2	Holly Park Dr.	Pg. 1, C-4	Karp Ave.	Pg. 4, B-1
F		Holly Park Way	Pg. 1, C-4	Kayenta Way	Pg. 4, B-1
Flamecrest Dr.	Pg. 2, B-5	Hollyberry Way	Pg. 3, C-4	Keifer Ave.	Pg. 1, E-3
Forty-Niner Dr.	Pg. 2, C-5	Honeysuckle Cir.	Pg. 3, C-4	Kent St.	Pg. 1, D-3
	Pg. 2, D-5	I		Kingsview Rd.	Pg. 3, D-4
Fouts Ct.	Pg. 1, C-2	I ½ Rd.	Pg. 3, D-4		Pg. 3, D-3
Fowler Dr.	Pg. 3, D-3		Pg. 3, D-5	Knotty Pine Ct.	Pg. 1, C-1
Freemont Dr.	Pg. 1, D-4	I Rd.	Pg. 4, C-2	Kokopelli Blvd.	Pg. 3, B-4
	Pg. 1, E-4		Pg. 4, C-3		Pg. 3, C-4
Frontage Rd.	Pg. 3, B-4	Inverness Way	Pg. 1, D-3	L	
	Pg. 3, B-5	Ironwood Ct.	Pg. 1, C-3	L ¼ Rd.	Pg. 2, A-5
	Pg. 3, C-5	J		La Mesa Ln./Ct.	Pg. 2, A-5
	Pg. 4, A-1	J Rd.	Pg. 1, E-3	N. Lake Ct.	Pg. 1, E-4
	Pg. 4, B-2		Pg. 1, E-4	S. Lake Ct.	Pg. 1, E-4
	Pg. 4, B-3		Pg. 1, E-5	Larchwood St.	Pg. 1, B-1
	Pg. 4, C-4	J.2 Rd.	Pg. 1, E-3	Larchwood Ct.	Pg. 1, B-1
	Pg. 4, D-5		Pg. 1, E-4	Laura Ave.	Pg. 1, D-2
			Pg. 1, E-5		Pg. 1, D-3
G		J.3 Rd.	Pg. 1, E-3	Laura Ct.	Pg. 3, D-3
Galena Dr.	Pg. 2, C-5		Pg. 1, E-4	Laurel Ct.	Pg. 1, C-3
Garnet Dr.	Pg. 2, C-5	J.6 Rd.	Pg. 1, D-3	Leo Ave.	Pg. 1, C-4
			Pg. 1, D-4	Lexington Way	Pg. 1, E-1
					Pg. 1, E-2

FRUITA ROADS INDEX

Sunbury Ln. Pg. 1, D-3
Suncrest Dr. Pg. 2, C-5
Sunflower Ave. Pg. 1, C-3
Sunrose Dr. Pg. 1, B-3
Sunset Ct. Pg. 1, C-2
Sunset Dr. Pg. 1, C-1
Pg. 1, C-2
Sycamore St. Pg. 1, D-2
Pg. 1, E-2

T

Tamarisk Ct. Pg. 1, D-3
Tara Dr. Pg. 2, C-4
Pg. 2, D-4
Taurus St. Pg. 1, C-3
Timber Falls Rd. Pg. 4, C-4

U

Ute Canyon Ave. Pg. 1, B-3

V

Vermont Lane Pg. 1, C-2
E. Via Le Paz Dr. Pg. 1, B-3
W. Via Le Paz Dr. Pg. 1, B-3
Vintner's Ct. Pg. 1, B-2
Virgo Way Pg. 1, C-4
Vista Valley Dr. Pg. 1, D-4

W

Wallace St. Pg. 2, D-5
Walnut St. Pg. 1, C-3
Waters Ln. Pg. 1, A-2
Wedding Canyon Ct. Pg. 4, E-1
Westwater Ct. Pg. 1, D-3
Wildwood Dr. Pg. 1, C-2
Pg. 1, C-3
Willow St. Pg. 1, C-1
Pg. 1, D-1
Wimberly Dr. Pg. 1, D-4
Windsor Park Dr. Pg. 1, D-3
Wolf Creek Ct. Pg. 1, D-3

Y

Yew St. Pg. 1, C-2